

# *Fine Turnings*

Seattle Chapter, American Association of Woodturners, March 2011



## *Fred's Message*

### *Inside this Issue*

President's Message	1
Monthly Program	1
Mentors	9
Want Ads	10
Officers/Contact People	12

Wow, February went by in a hurry! However, with last week as evidence, winter is not over yet. I've spent a lot of time in the shop during the last month as being outside wasn't really pleasant. Not to worry, though. With a pile of wood blanks from earlier Wood Rat outings, I was eager to get to turning. It's been a few months since I've done anything larger than a pen. So, it was back to basics. First a little warm-up making a lot of coves and beads, then an attempt to do a quick bowl. Hmm... not bad, but lots of people make bowls. What makes a simple bowl or other object special? It's a special edge on the bowl or an extra bead. Also, it is about form. I painted the bowl black and looked again. I have a few things to learn about form. After several tries, the form got a little better. I filled the voids in the wood with crushed stone. What about additional lines and grooves filled with stone? I added some color to another bowl, using dyes that have been sitting on the shelf for a couple of years.

This month was all about trying something new instead of repeating the same projects over and over. I didn't come out of the shop with anything worthy of the "show and tell", but I did spend several enjoyable days – and that is what woodturning does for me.

### *We're Taking On Our Favorite Part of Turning in March*

Don Nelson, of Mirka Abrasives, will be helping us to solve the dirtiest, for me hardest at times, part of turning in March-sanding for finish preparation. I once was told a poor finish prep. can hide a beautiful project and conversely a very good finish prep can hide a poor project. By finishing properly we want to exemplify the good project. March's meeting will be an important one. From Mirka's website: Mirka products and product combinations are widely used within the wood working industry. Our products are used by manufacturers of furniture, instruments, cupboards, frames and cabinets. We can deliver suitable solutions for all types of sanding work, from rough sanding to the precision polishing of



*Seattle's Web Site* Check us out! We are at: <http://www.seattlewoodturners.org>

# 2011 Calendar Seattle AAW

## January 2011

Tues, Jan. 11-Bd. Mtg 7:00 PM @ Rick Terney's

Thurs. Jan 13, Club Mtg. 6:30 PM @ 7304 NE 175th St. Kenmore

Fred Floyd-Maloof-style rocking chair

## February 2011

Tues. Feb. 8-Bd. Mtg 7:00 PM @ Jack McDaniel's-not the recent place!

Thurs. Feb 10, Club Mtg. 6:30 PM  
Annual Tool Swap

## March 2011

Tues. March 8-Bd. Mtg 7:00 PM @ Rick Terney's

Thurs. March 10, Club Mtg. 6:30 PM-Don Nelsen from Mirka sandpaper

March 19-John Jordan in Anacortes

March 25, 26, 27,-Trent Bosch in Columbia Falls, MA

## April 2011

Tues. April 12-Bd. Mtg 7:00 PM @ Rick Terney's

Wed. April 13-Denise DeRosa's day long demo

Thurs. April 14-Club Mtg. 6:30-Denise DeRosa

## May 2011

Tues. May 10-Bd. Mtg 7:00 PM @ Rick Terney's

Thurs. May 12-Club Mtg. 6:30 PM

## June 2011

Tues. June 7-Bd. Mtg 7:00 PM @ Rick Terney's

Thurs. June 9-Club Mtg. 6:30 PM-Dick Watson on "the skew"

## July 2011

Tues. July 12-Bd. Mtg 7:00 PM @ Rick Terney's

Thurs. July 14-Club Mtg. 6:30 PM

## August 2011

Tues. Aug. 9-Bd. Mtg 7:00 PM @ Rick Terney's

Thurs. Aug. 11-Club Mtg. 6:30 PM  
Club Picnic

## September 2011

Tues. Sept. 6-Bd. Mtg 7:00 PM @ Rick Terney's

Thurs. Sept. 8-Club Mtg. 6:30 PM-Samuel Avelino

Sat. Sept. 10-Samuel Avelino

Begin to think of serving club as elected officers

## October 2011

Tues. Oct. 11-Bd. Mtg 7:00 PM @ Rick Terney's

Thurs. Oct. 13-Club Mtg. 6:30 PM-Martha Collins Club

## November 2011

Tues. Nov. 8-Bd. Mtg 7:00 PM @ Rick Terney's

Thurs. Nov. 10-Club Mtg. 6:30 PM  
Elect officers

## December 2011

Tues. Dec. 6-Bd. Mtg 7:00 PM @ Rick Terney's

Thurs. Dec.10-Club Mtg. 6:30 PM  
Christmas Party.

**January 2012: Nick Cook will be in the area**

## In the Library...

This month we have added Russ Fairfield's trio of DVD's Finishing Secrets to the library's collection. Each two hour disc covers most of the finishing techniques available for completing your woodturning projects.

The list of necessary equipment is short. VIVA paper towels, grocery bag paper, good sandpaper, cheese cloth, a new velour towel, some batting and a natural bristle horse grooming brush or natural bristle scrub brush. Disc 1 starts with quick finishes and No.3 ends with durable finishes. Throughout all the discs, the emphasis is repeated, "make sure that you have sanded your wood as if you would be using it bare" In other words, no finish will hide your tear- out, open grain or other flaws in your piece.

Disc one covers sanding and wax finishes. Russ likes the Viva paper towels as they have finer paper fibers that will not scratch. He recommends that you buy all your sandpaper from the same manufacturer, as not all sandpapers are the same and the grits are not uniform grades from vendor to vendor. A paper towel is used to wipe down the project every time grits are changed. This prevents scratching by the particles left from the larger grit as the next finer grit is being used.

A source for sandpaper is **Industrialabrasives.com**. If you buy the hook and loop sheets and want the scalloped edges, which tend to scratch less, there is a 3" dye cutter that has the scalloped edge. This can be found at any craft supply. It retails for about \$25.00. Price verses time spent needs to be addressed in choosing this method.

Finish discussion starts with waxes. Not durable, but quick and they will not change the color of the wood. Inexpensive waxes that can be used are household paraffin and candle wax. Commercial waxes in stick form, Tripoli, carnuba and white diamond must be used at a high speed to melt the wax. The Beall Polishing System hurries the process. The buffers should be cleaned before each use with a block of wood. Russ recommends Trewax, if you wish to use a paste wax. Too much wax can be disastrous and will leave a cloudy finish. The grooming brush is used to burnish the wood.

Disc 2 continues with waxes. Russ uses Kiwi shoe polish to change the color of wood as it is available in a large variety of colors and only \$4.99 a can. Commercial patenating wax is limited to black or white (liming wax). Again, the wood must be at its best in the pre-finish state as the color will magnify any flaws. Watco's Satin Wax is often applied as a sealer because it will accept all other finishes over it.

Dyeing is demonstrated using a water-soluble aniline dye. Aniline dyes are colorfast. He dyes a plate black. However, he starts with a blue dye as the base explaining that the blue under the black will color correct the black to keep it from becoming bronzy. The wood should be bleached, if using red or green dye. On the black dyed plate, Rub and Buff was rubbed on, imparting a gorgeous golden glow in the more open grain lines.

Lacquer finishes are also covered. Deft Clear Wood Finish was the lacquer of choice. It doesn't yellow nor become brittle, however, will not work well on an oily wood because it tends to lift. Moreover, if the piece has sharp delineating edges, the lacquer might crack as the wood moves. A 3 ¼ mop brush made of sable or squirrel hair laid the finish on beautifully. Daniel Smith would be a good source for that. Will be pricy \$\$\$.

Quite a bit of time was spent on the properties of shellac. Not easy to use, but hollow forms, weed pots and pens are candidates for this finish. Behlens Super Blond was the commercial product of choice. There is also a recipe for making Shellac. Shelf life is about 6 months.

Disc 3 addresses French Polish finish. Again, item must be impeccable with no surface irregularities. The CA glue finish should be reserved for smaller items, as the finish needs to be applied in a continuous sweep. Then quickly wiped, wet sanded and reapplied at a slow speed as CA is a plastic and will melt under high heat. Opposed to CA finish, Friction polish requires as high a speed as you can handle and as much heat as your fingers can stand. Shellawax was mentioned, I like Dr's Woodshop High Speed Friction Polish. There is also a recipe to make your own.

Next, oils and varnishes are discussed. They are the most protective, easiest to repair and most impervious to detrimental influences. Non-drying oils used in food safe containers are all of the cooking oils, mineral oil and citrus oil. Sunflower seed oil ranks high on the list, as it will not get rancid and has little odor. Citrus oils

(see p. 4, top)

will impart a good fragrance to your salad bowls. Several recipes for oil finishes are discussed. I would try the Cash and Carry for your oils.

Lastly, there is no universal finish. In picking a finish, one must consider what are important, durability, color, enhancement, protection, wood stability and /or ease of application.

These DVDs are filled with 6 hrs of helpful information. The written instructions can also be downloaded from Russ’s Web site. Woodturner-Russ.com

Russ Fairfield passed away January 2011

Next month Malcom Tibbett's 3 disc DVD set on segmented turning will be reviewed.

Thank you for purchasing the older books and videos. We made \$35.00 to put towards new materials. We still have some important videos that we would like to keep, but need a volunteer or two to copy them onto DVD’s. Please email me at [cachet4u@comcast.net](mailto:cachet4u@comcast.net) , if you can help.

Our new “sign out “sheet for books and DVD’s is asking for your email address. This is added so that I can remind you before the next meeting that you need to return them. We are acquiring some great new material and want to let as many people use it as possible and if you forget to return your checked out items, another month is lost to share these great learning tools.

**Seattle Chapter of AAW Meeting Minutes: February 12, 2011 Board Meeting**

Secretary: Jim Steck

**Fred Floyd:**

We have been asked by our Kenmore facility hosts to protect tables from dirt, tar, etc. by placing plastic and/or tarps on them prior to use. JIM: Who ensures this is done and where are they located?

Requested that the calendar should identify the meetings requiring the trailer at be at the Kenmore facility by 6:00pm.

**Jack Frost:**

Once again the proposal was put forth to purchase a club mini-lathe for \$500. Most agreed the total expense would be near \$1,000, once accessories are purchased. Existing members (Jack McDaniel, Jose Pantoya, and Hal Johnson) volunteered their lathes for club use, when needed. No purchase decision made.

Suggested that Biz have authority to sell old books and videos at the Tool Swap to raise cash for new library purchases. Approved by Board.

**Les Dawson:**

An upcoming web subcommittee meeting would he held soon.

**George Hart:**

Requested permission to spend ~\$170 for a tent lighting system for club photography. Approved by Board.

**Jim Steck:**

Meeting minutes will be distributed electronically to Board Members. Send responses requesting changes within 2-3 days, otherwise the minutes are considered approved.

**Mark Petersen:**

Thanks to Jack Wayne, Woodcraft has agreed to allow us to host full-day demonstrations at their facility, assuming it’s available for that particular date. Kudos to Mark, for arranging a full line-up of demonstrators and events scheduled for the year. The Board overwhelmingly agreed that demonstrators and full-day sessions should showcase highly-qualified woodturners, rather than seeking out beginner-friendly events. All agreed that Sawdust Sessions and Symposiums were the best place to enhance beginning skills.

**Biz Jaskovsky:**

Tom Johanson informed us that \$500 is available from the general fund for new book and video library purchases, and all agreed that the Librarian could spend at her discretion.

Email addresses may soon be required to check-out materials from the library, as it seems some (many) often forget to return items in a timely manner. Process may be enhanced, such that email reminders are sent out prior to the expected return date (next meeting).

**Board Attendees:** Jim Steck, Mark Petersen, Biz + Jim Jaskovsky, Jack McDaniel, Jose Pantoya, Fred Floyd, David Lipincott, Jack Frost, Les Dawson, Mike Hughes, Don McNutt, Hal Johnson, Tom Johanson, John Moe, George Hart



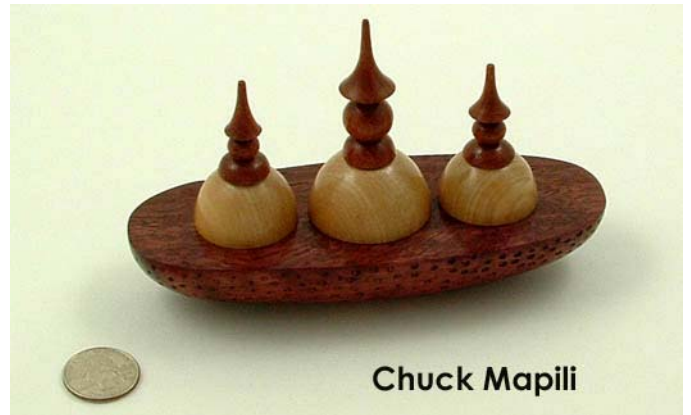
Byron Canfield



Jack Frost



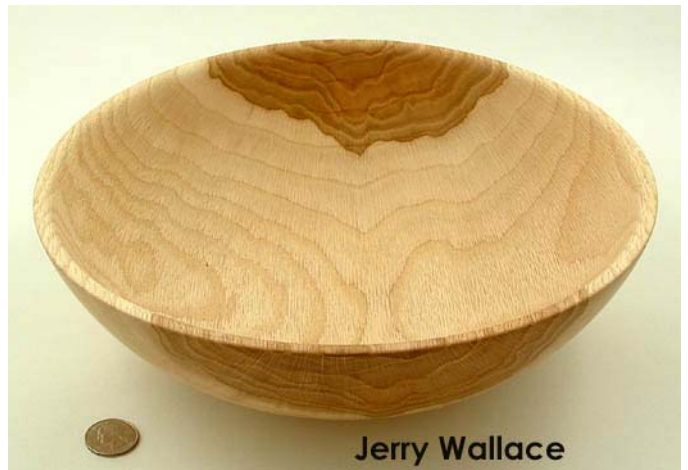
Byron Canfield



Chuck Mapili



David Lippincott



Jerry Wallace



Jerry Wallace



Jack Frost



Jim Cotter



David Lippincott



Jim Cotter



David Lippincott



Byron Canfield



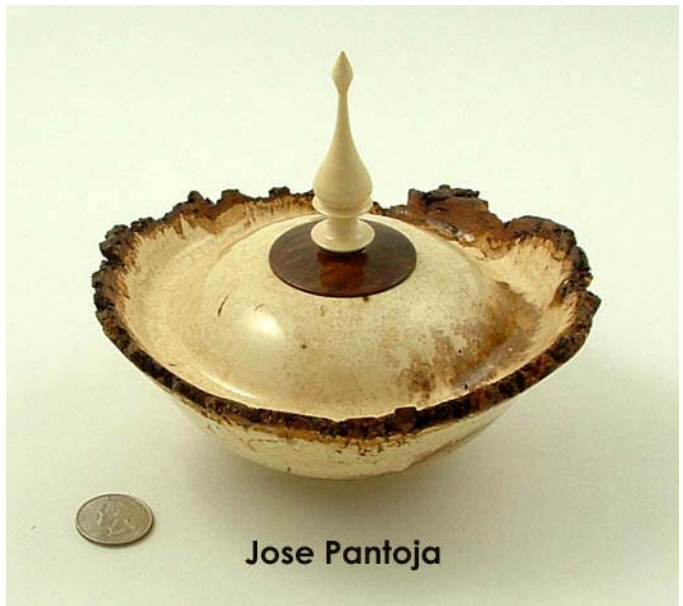
George Hart



Bob Sievers



Jim Cotter



Jose Pantoja



Jose Pantoja



Shawn Gordon



Karl Feret



Mike Hughes



Mike Hughes



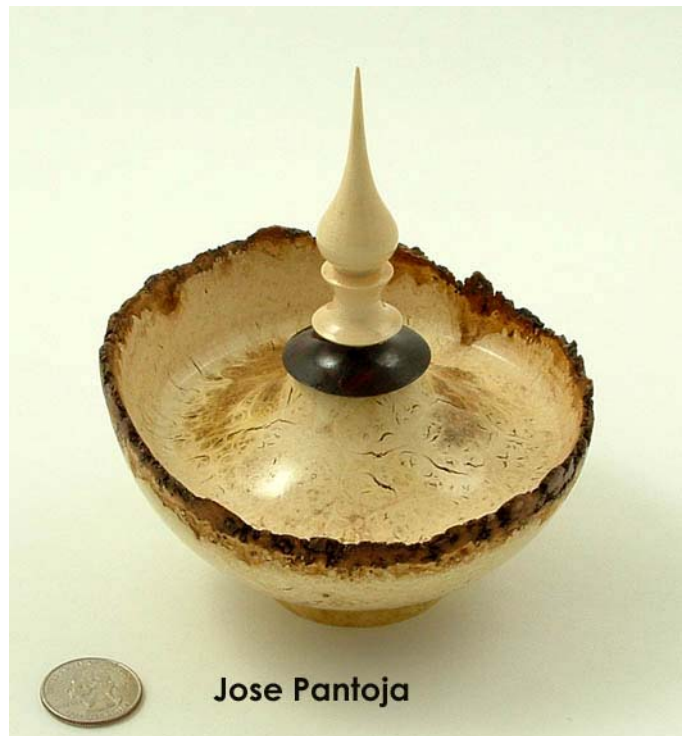
Karl Feret



Mike Hughes



Karl Feret



Jose Pantoja



Shawn Gordon

### ***Future Happenings for Seattle Turners:***

In the next few months there will be many things happening in our area for turners. In March we will learn about abrasives from Mirka Abrasives, be able to attend demonstrations from John Jordon in Anacortes, go to Montana watch Trent Bosch demonstrate his wizardry with wood, and learn how to make unique purses with Denise DeRose in April and Samuel Avelino in September. On the next page and last month I ran information on John Jordon and Trent Bosch. Below is information about Denise DeRose, new to me.

Denise DeRose, a woodturner for nearly 10 years, from Oakland, California, has developed a unique niche in the woodturning marketplace. She makes and markets fully functional handbags from wood. Many of her handbag designs can easily be converted to unconventional desk and jewelry boxes. Her work is sold through her website ([www.denisederose.com](http://www.denisederose.com)), at high end craft shows and galleries and at a handful of retail establishments in Seattle ( Northwest Fine Woodworking Gallery), Hollywood, San Francisco and Paso Robles.

Sat. Sept. 10-Samuel Avelino

Avelino is from St. John, Virgin Islands. Even at a young age he loved creating beauty with his hands and aspired to be an Industrial Arts teacher. He received his BS degree in Industrial Arts from North Carolina A & T State University and his Masters degree in Education from Eastern Michigan University. Following his formal education Avelino returned to his native St. John where he has taught Industrial Arts at the Julius E. Sprauve School for more than twenty years. He has been a woodturner for more than 25 years. During that time he has created many fine pieces. Adding to the unique value of each of his signed and numbered pieces is the fact that they are made from woods found in the Virgin Islands: mahogany, sea grape, lignum vitae, kasha, white prickle, amarod, genip, and black olive. Avelino blends elements of Virgin Islands/Caribbean decorative art and style with his love for classical and modern turnings. At this time I do not know the program.

### ***Seattle Mentors***

A member asked to have a portion of the newsletter devoted to a "forum" in which questions might be posed and answers sought. Great idea! Problem: I have tried this before and it was a total waste-no response, ever. In discussion at the board meeting it was brought up that there may be too much time between posed problems and responses. Additionally, it was pointed out that this is precisely what mentors are for. They are always listed in the newsletter. Call/email them. They want to help. They are excellent sources. Should they not know an answer, they will know how to find an answer.

<i>Bob Sievers (off-center work),</i>	<a href="mailto:woodchipper1@hughes.net">woodchipper1@hughes.net</a>	(360) 897-8427
<i>Allan Rumpf (beginning spindle work)</i>	<a href="mailto:lmargaret@aol.com">lmargaret@aol.com</a>	(425) 788-4656
<i>Hal Johnson</i>	<a href="mailto:ldognobird@comcast.net">ldognobird@comcast.net</a>	(425) 788-2221
<i>John Moe</i>	<a href="mailto:jandjmoe@msn.com">jandjmoe@msn.com</a>	(425)-643-4522
<i>Les Dawson (beginning work)</i>	<a href="mailto:woodguy103@aol.com">woodguy103@aol.com</a>	(425)-432-3879
<i>Jack McDaniel</i>	<a href="mailto:jack@aocb.com">jack@aocb.com</a>	(425) 486-9205
<i>Jack Wayne</i>	<a href="mailto:captjack327@yahoo.com">captjack327@yahoo.com</a>	
<i>Corey Markus</i>	<a href="mailto:tahomabox@aol.com">tahomabox@aol.com</a>	(425)-432-5435
<i>John Shrader</i>	<a href="mailto:jai.shrader@comcast.net">jai.shrader@comcast.net</a>	(425) 653-3504

### ***Fill the Empty Bowls Box Now***

Don't forget one of the more important programs we are involved in-EMPTY BOWLS! Vern Tator has gathered bowls at the January, February and will still gather them at the March meeting. Size is not important in these bowls, except that they should be big enough to hold something. Quality should not be embarrassing. Don't forget to sign your work!

***March is our last month for donations for this year. Make one NOW!***

## *Inquiring Minds Want to Know*

Two interesting opportunities present themselves club members might find interesting. Both seem great to me, especially the Montana gig. My daughter lives there and I could visit and turn. What an opportunity! Anyway, see below.

Coming Saturday, March 19, 2011:

# JOHN JORDON!



\$35 advance registration  
\$40 at the door  
Registration fee includes a hot lunch, coffee,  
tea, water & snacks

Location:  
**Anacortes First Baptist Church**  
2717 "J" Avenue  
Anacortes, WA 98221  
9 am – 4 pm



**Morning:** John will discuss the aesthetics and properties of wood that every woodturner needs to know.

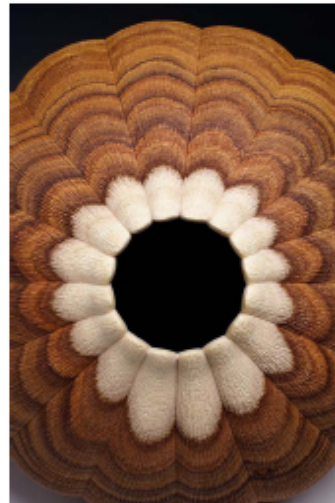
- How to use grain & color for the best effect
- The advantages of using fresh, green wood
- Why wood cracks and how to prevent it simply
- Dealing with wood movement & shrinkage
- The myths about using green wood

**Afternoon:** John will demonstrate & discuss how he makes his famous signature pieces

- Turning & Hollowing
- Carving
- Texturing
- Finishing

John Jordan, a woodturner from Cane Ridge, Tennessee is known primarily for his textured and carved hollow vessels. John has been featured in nearly every major turning exhibition the past twenty years. His work has received numerous awards, and is in the permanent collections of many museums and corporations, including the Renwick Gallery of the Smithsonian, the High Museum of Art in Atlanta, the American Craft Museum in New York City, the White House in Washington, the Los Angeles County Museum of Art, the Mint Museum of Craft + Design in Charlotte, the Fine Arts Museum in Boston, and the Detroit Institute of the Arts and the prestigious Victoria and Albert Museum in London, England.

You can see John's work at [www.johnjordanwoodturning.com](http://www.johnjordanwoodturning.com)



**FOR ADDITIONAL INFORMATION**  
Email: [VicePresident@NWWWWT.ORG](mailto:VicePresident@NWWWWT.ORG)  
Phone: Rick Anderson (360) 671-0532

**TO REGISTER:**  
**MAIL \$35 & YOUR CONTACT INFO TO:**  
**GREG ANDERSON**  
23607 HIDDEN VALLEY ROAD  
GRANITE FALLS, WA 98252

## **Glacier Woodturners Present Trent Bosch**

All day demonstration  
March 26, 2011 Lunch  
included.

All day hands on work-  
shop March 25 & 27.....  
maximum of eight per  
session. More sessions  
can be scheduled if de-  
mand warrants.

Where: Glacier Wood-  
turners Club House  
Hanson Trucking Building  
251 Truck Route  
Columbia Falls, Montana

Costs: Demonstration.....  
\$50.00 if paid by Febru-  
ary 1  
\$60.00 thereafter

Workshop....\$100.00  
before 2/1  
\$110.00 after 2/1

Limited accommoda-  
tions, with local turners,  
are available for out of  
town guests

[Driving directions and  
map are available at web-  
site.](#)

Contact: Skip Beardsley  
406-881-2007  
[mtnarts@digisys.net](mailto:mtnarts@digisys.net)

## WANT ADS

This space is set aside for members to advertise free of charge to sell or purchase tools, wood, etc. Get your ad to Les Dawson by the third Thursday of the month for inclusion in the next newsletter.

### MORE WOODTURNING

The magazine for turners. Published 10 times a year by Fred Holder. One yr: \$35.00; Two yrs: \$70.00; Three yrs \$105.00. Electronic version \$25/yr. delivered from More Woodturning online at: [www.morewoodturning.net](http://www.morewoodturning.net) Lots of great information for your browsing pleasure. More Woodturning PO Box 2168 Snohomish WA 98291-2168 Phone: 360-668-0976 email: fred@morewoodturning.net

Bow River Craft Woods: We supply woodturners, bow makers, luthiers, carvers and woodworkers with figured, spalted, burl and specialty wood. We have bowl blanks in MANY sizes. Turning squares range from 2x2 to 8x8 in various lengths. Burls are cut to squares or slabs. We have in stock: big leaf maple, oak, acacia, cascara, chestnut, pacific yew, yellow cedar, walnut, magnolia, pear, apple and cherry. We are located at 11443 Mcsween Road Chilliwack, B.C. Canada **Our Phone # is 604-795-3462 Fax # 604-795-4058 e-mail bow-river@cwk.imag.net web address is www.bowrivercraftwoods.com**

Club discounts available: Show your Club Membership Card and get 10% off at Rocklers, Woodcraft Supply, and Crosscut Hardwoods.

Woodcraft furnishes all types of turning supplies in addition to a wide general stock of wood-working equipment. Additionally, show your membership card making available a 10% discount. 5963 CORSON SOUTH, SEATTLE 206 767 6394

**Rocklers** furnishes all types of turning supplies in addition to a wide general stock of wood-working equipment. Additionally, show your membership card making available a 10% discount. 3823 STONE WAY NORTH, SEATTLE 206 634 3222 OR 345 TUKWILA PARKWAY, TUKWILA 206 244 9161

**Craft Supply, USA**-specialists in all types of turning supplies and woodturning tools. [WWW.WOODTURNERSCATALOG.COM](http://WWW.WOODTURNERSCATALOG.COM)  
**Equipment Sales and Surplus** is an outlet for repaired and overstocked tools and equipment. Specialize in Jet, Powermatic and Performax equipment. 1801 West Valley Highway North 253 804 3211

**Packard Woodworks, Inc**-specialists in all types of turning supplies and woodturning tool [WWW.packardwoodworks.com](http://WWW.packardwoodworks.com) 1 800 683 8876

For Sale: Dust collection equipment. See at: <http://seattle.craigslist.org/sno/tls/2092086738.html>

For Sale Oneway 2 hp 2436 lathe, braking resistor, remote switch. \$3500 or \$3700 with 17 inch inboard or outboard extension. I am always on the lookout to rescue/recycle specific fresh cut wood. For more information please go to <http://www.billluce.com/treeinfo.html>

I have a small lathe to sell:

CarbaTec Mini Lathe, 12" between centers, 6" diameter. All cast Iron in excellent condition.

The lathe is mounted on a 5 drawer oak work cabinet. Mounted on rollers and with a built in work light.

Lathe has a #1 Morse taper, 3/4 by 16 TPI spindle, and includes the motor.

This is set up and complete, ready to use in a shop or for demonstrations.

I would like \$300. [JamesHatcher@Matteicos.com](mailto:JamesHatcher@Matteicos.com)

Klingspore has a 10% discount for club members. It covers most of their items, except power tools. They do not sell club members names or addresses. They have some benefit boxes of selected items of sandpaper that clubs can use as they see fit. They want the names and addresses and phone numbers of members. The names are for sending catalogs and the phone numbers are used to verify any orders either placed over the phone or via the internet. They do not do phone solicitations. This information was requested by the board at our meeting is will be open for discussion at the next meeting of the board. I have purchased from them in the past and I get a 10% discount each time I purchase sandpaper.

**VB 36 Master bowl turner Reduced Price \$4800.00 O.B.O.**

**Mehrdad Azarpay**

9912 121st Ave N.E. Lake Stevens, WA. 98258.

### *Shop Space Needed*

" Wanted a lathe to turn on until I get a shop later this spring. My machines are packed, but I have my tools out. I would like to have the use of another turner's lathe, to try to keep my skills sharp. Turning it the way I escape the stress of not having a shop and remodeling a house, It gives me a few minutes of sanity each

## *Seattle Chapter AAW Officers/Contact Persons 2011*

**President:** : Fred Floyd

[fred.floyd@comcast.net](mailto:fred.floyd@comcast.net) 425-837-0436

**Treasurer:** Tom Johanson

[tjohanson@gmail.com](mailto:tjohanson@gmail.com) 425-828-0929

**Program Chair:** Mark Petersen

[mapjog@comcast.net](mailto:mapjog@comcast.net) 360-376-4586

**Hospitality:** Michael Hughes

206-999-6453; [applepress09@frontier.com](mailto:applepress09@frontier.com)

**Head Wood Rat:** Jack Wayne

[woodwayn@msn.com](mailto:woodwayn@msn.com) (425) 488-9561

**Members-at-Large:** Jack Wayne

[woodwayn@msn.com](mailto:woodwayn@msn.com) (425) 488-9561

Hal Johnson

[ldognobird@comcast.net](mailto:ldognobird@comcast.net) (425) 788-2221

Jack Frost [bevfrrost@comcast.net](mailto:bevfrrost@comcast.net) 425-432-0588

**Vice President:** Rick Terney

[rick\\_terney@hotmail.com](mailto:rick_terney@hotmail.com); (425) 213-4353

**Newsletter Editor:**

Les Dawson

[woodguy103@aol.com](mailto:woodguy103@aol.com); 425-432-3879

**Glue:** Robert Key

[robertkey@iinet.com](mailto:robertkey@iinet.com); 425-271-1968

**Members-at-Large:**

Mike Hughes

[mmhughes7@comcast.net](mailto:mmhughes7@comcast.net); (425) 486-1778

John Moe

[jandjmoe@msn.com](mailto:jandjmoe@msn.com) 425-643-4522

David Lippincott (425) 745-1045

[woodturner47@gmail.com](mailto:woodturner47@gmail.com)

Corey Markus [tahomabox@aol.com](mailto:tahomabox@aol.com)

425-432-5435

**Secretary:** Jim Steck

[james\\_steck@comcast.net](mailto:james_steck@comcast.net) (425)-246-3360

**Library:** Biz Jaskovsky

[cachet4u@comcast.net](mailto:cachet4u@comcast.net) (425) 788-3762

**Training:** Board Members and Mentors

**Sealer:** Jose Pantoja

[jjpantoja@comcast.net](mailto:jjpantoja@comcast.net); (425) 788-9273

**Web Page:** Treesa Hertzelt reach Treesa through

Fred Floyd @ [fred.floyd@comcast.net](mailto:fred.floyd@comcast.net)

425-837-0436

**Club Photographer:**

George Hart

[ghart37@q.com](mailto:ghart37@q.com); 360-886-2542

**NEXT CLUB MEETING : *March 10 @ 6:30 PM***  
**7304 NE 175th St. Kenmore, WA 98028**

***17855 W. Spring Lake Drive South East***  
***Renton, WA 98058***